



VISUAL ART VIRTUAL LEARNING

# ART II: THUMBNAIL THURSDAY

APRIL 23RD, 2020



LESSON: 04-23-2020

## OBJECTIVE/LEARNING TARGET:

Students will take time to practice the skill of drawing from observation using shoes as their subject and Andy Warhol as their artist of inspiration.

Take a closer  
look at a Famous  
Artist and their  
work

Explore a  
technique or  
Artist happening  
somewhere in the  
world right now!

Figure drawing  
challenges

Masterpiece  
Monday

Technique  
Tuesday

What's Up  
Wednesday

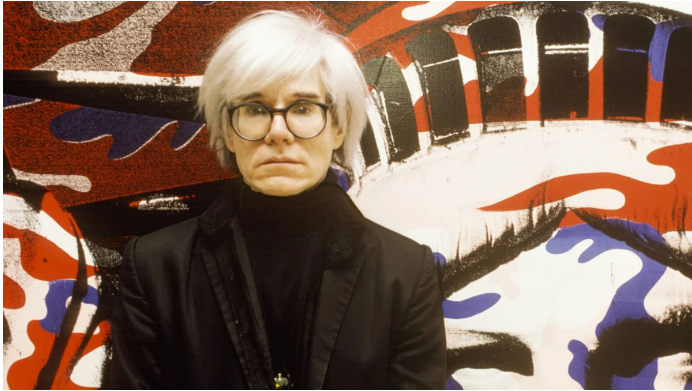
Thumbnail  
Thursday

Figure  
Friday

Practice Skills  
Known and new  
techniques

Small, loose  
sketches of  
objects we find  
or design  
concepts

# THUMBNAIL THURSDAY



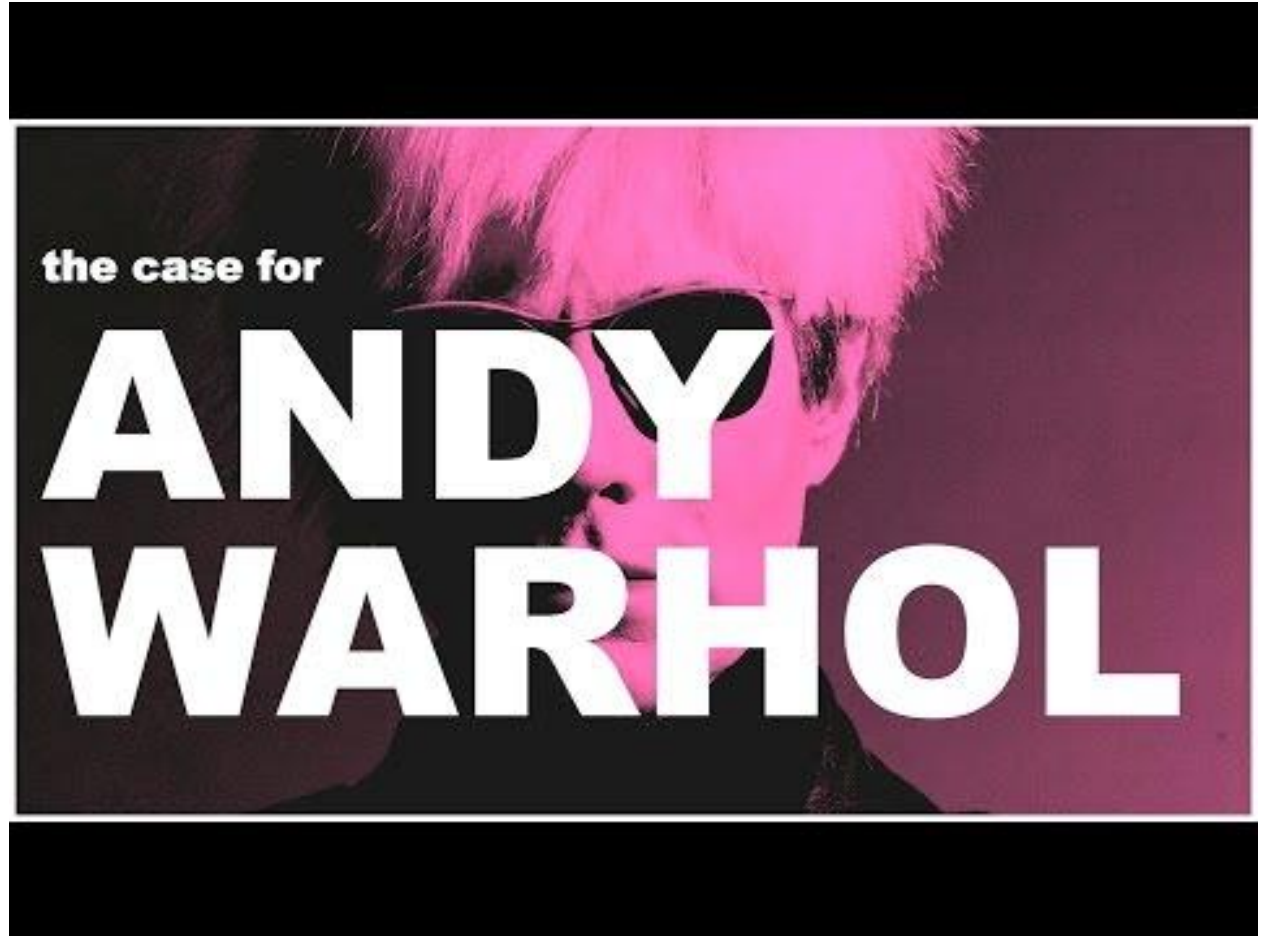
Today as we begin our third Thumbnail Thursday, I want to bring an Artist to your attention:

## *Andy Warhol*

You may have heard of him before..  
Possibly when your Art teacher introduced Pop Art?!

Today we will look into some of his work BEFORE he became known for his Pop Art.

BEGIN TODAY  
BY VIEWING  
THIS VIDEO:

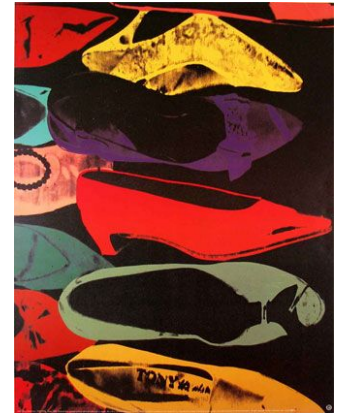


<https://www.youtube.com/watch?v=7VH5MRtk9HQ>

# ILLUSTRATIONS OF SHOES?

As seen in the video:

- Warhol began his Art career working in Advertising as a Commercial Illustrator
- A common and recurring theme in Warhol's work was **shoes...**



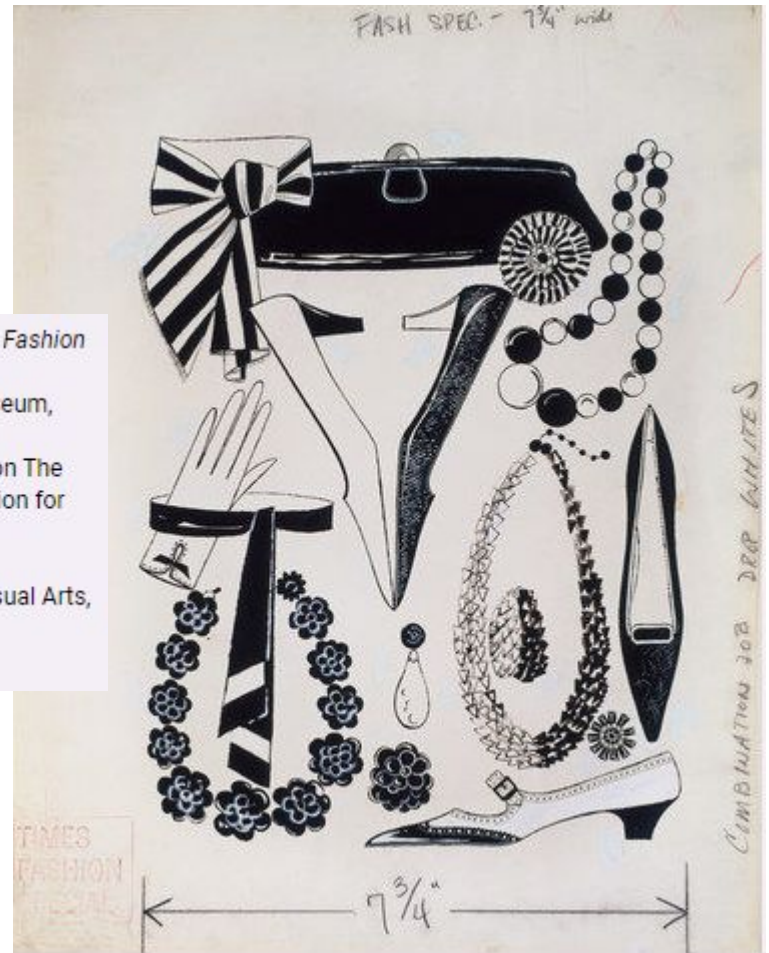
# ILLUSTRATIONS OF SHOES?

By visiting The Warhol Museum you can learn more about Andy Warhol before he became known as a Pop Artist

Andy Warhol, *Multiple Fashion Accessories*, 1950s  
The Andy Warhol Museum, Pittsburgh; Founding Collection, Contribution The Andy Warhol Foundation for the Visual Arts, Inc.  
© The Andy Warhol Foundation for the Visual Arts, Inc.  
1998.1.1227

Following the link below:

<https://www.warhol.org/exhibition/adman-warhol-pop/>



# THUMBNAIL SKETCHES

## Art Vocabulary:

### Composition-

arrangement of elements  
in a work of art

**Point of View-** angle  
from which the viewer  
sees an object



Your thumbnail drawings may simply be  
for your own **practice** and benefit...

They can also be used as a kind of  
**rough draft**  
for a final art piece.

Practice looking at Shoes from  
different angles.

You may use...

- Shoes you can find around your house
- Or pictures of shoes on the internet

*Andy Warhol*



# SHOES

Today I want you to fill your paper with thumbnail sketches of shoes of all shapes, sizes and colors.

**Start by drawing the shoes realistically and from observation**

*Then, the more you draw, the more you should try...*

Think about **function**, *style*, and purpose.

Pretend you are designing shoes for a specific person:

An athlete. A Fashion Model. A teacher. A Teen.

The possibilities are endless...



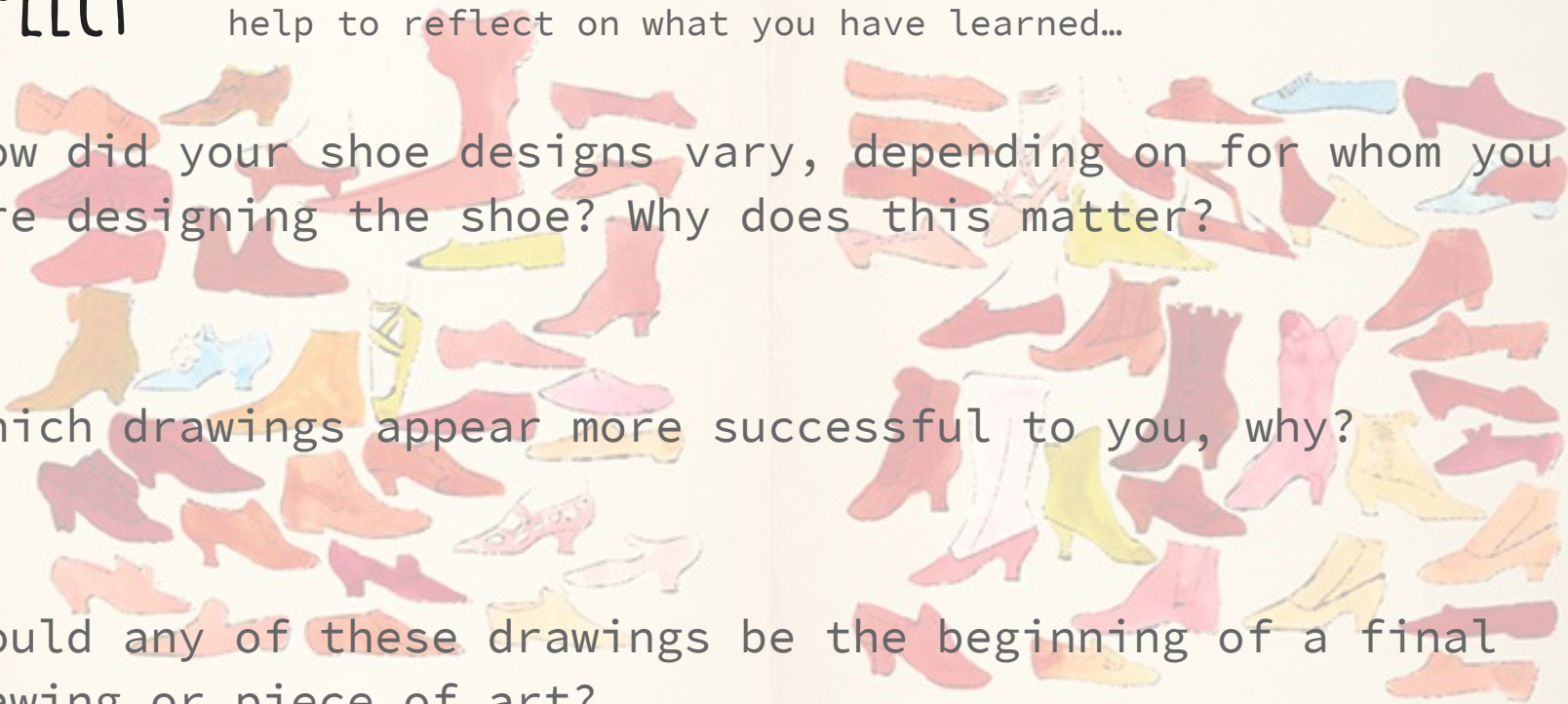
# REFLECT

Once you have filled a page with thumbnails of **shoes** it can help to reflect on what you have learned...

-How did your shoe designs vary, depending on for whom you were designing the shoe? Why does this matter?

-Which drawings appear more successful to you, why?

-Could any of these drawings be the beginning of a final drawing or piece of art?



# ADDITIONAL RESOURCES

To see the actual technique which Warhol used when creating his unique, blotted ink illustrations of shoes check out this video:

<https://www.youtube.com/watch?v=laOLC2eYZRM>

Andy Warhol has an entire museum dedicated to his life and work!

Check it out: <https://www.warhol.org/>

POSTERS WE USE TO  
TEACH YOU...

# ELEMENTS & PRINCIPLES OF ART

## LINE

Line is the path of a point moving through space



## PATTERN

Pattern refers to the repetition or reoccurrence of a design element, exact or varied, which establishes a visual beat.



## SHAPE / FORM



Shape implies spatial form and is usually perceived as two-dimensional. Form has depth, length, and width and resides in space. It is perceived as three-dimensional.

## RHYTHM / MOVEMENT

Rhythm or movement refers to the suggestion of motion through the use of various elements.



## COLOR

Colors all come from the three primaries and black and white. They have three properties – hue, value, and intensity.



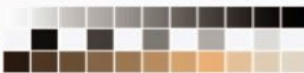
## PROPORTION / SCALE

Proportion is the size relationship of parts to a whole and to one another. Scale refers to relating size to a constant, such as a human body.



## VALUE

Value refers to relative lightness and darkness and is perceived in terms of varying levels of contrast.



## BALANCE

Balance is the impression of equilibrium in a pictorial or sculptural composition. Balance is often referred to as symmetrical, asymmetrical, or radial.



## TEXTURE

Texture refers to the tactile qualities of a surface (actual) or to the visual representation of such surface qualities (implied).



## UNITY

Unity is achieved when the components of a work of art are perceived as harmonious, giving the work a sense of completion.



## SPACE / PERSPECTIVE

Space refers to the area in which art is organized. Perspective is representing a volume of space or a 3-dimensional object on a flat surface.



## EMPHASIS

Emphasis refers to the created center of interest, the place in an artwork where your eye first lands.



HOW TO SHOW US  
YOUR  
CREATIONS...

We'd love to see your  
work!!!

Email your art teacher and  
be sure to tag your  
principal as well.

abigail\_gordon  
@idschools.org

(You may send examples to your own art teacher!)